



**Gilbert & Hall**

DEVELOPMENTS

[www.gilbertandhall.co.uk](http://www.gilbertandhall.co.uk)

FOR FURTHER INFORMATION, PLEASE CALL THE MARKETING SUITE

**Tel: 0115 968 3288**

[www.angloscotianmills.co.uk](http://www.angloscotianmills.co.uk)

THESE PARTICULARS ARE THOUGHT TO BE MATERIALLY CORRECT THOUGH PLANS AND SPECIFICATION MAY BE SUBJECT TO ALTERATION AND THEY DO NOT FORM PART OF ANY CONTRACT. FRONT COVER DEPICTS COMPUTER GENERATED IMAGE. DESIGN & PRINT: STILLMAN DESIGN. MAY 06. T: 0115 948 7969.



**ANGLO SCOTIAN MILLS**

BEESTON NOTTINGHAM

PHASE II: FRANCIS MILL - A CONVERSION OF A 19TH CENTURY GRADE II LISTED MILL BUILDING

**FLOOR PLANS**

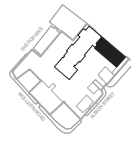
Another development by

**Gilbert & Hall**

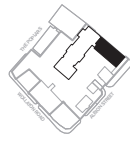
DEVELOPMENTS

[www.gilbertandhall.co.uk](http://www.gilbertandhall.co.uk)

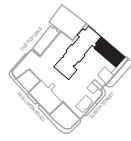
FRANCIS MILL  
GROUND FLOOR



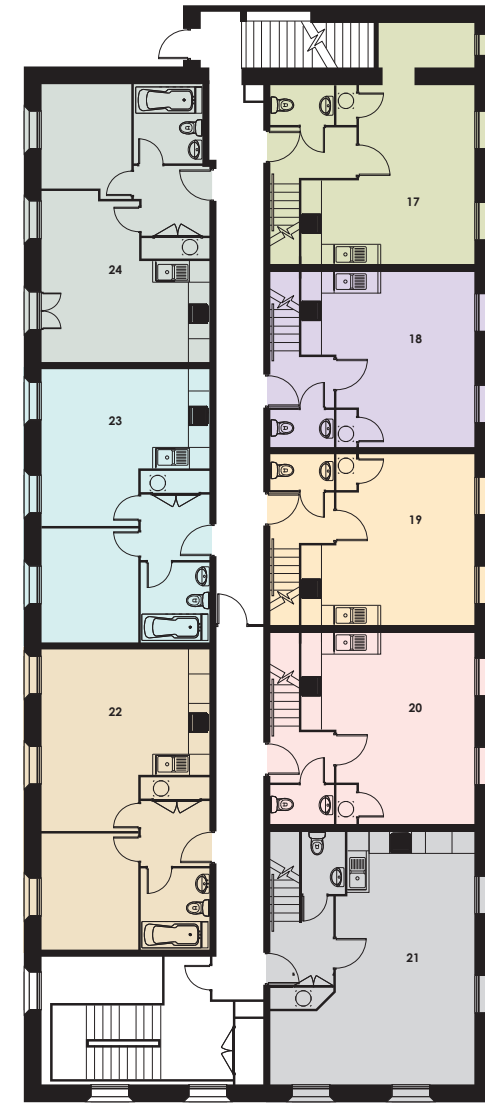
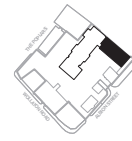
FRANCIS MILL  
MEZZANINE (FIRST FLOOR)



FRANCIS MILL  
SECOND FLOOR



FRANCIS MILL  
THIRD FLOOR



FRANCIS MILL  
DUPLEX FLOOR

